

## Series - W9600

## PUSHBUTTON SWITCHES Wide Button Moisture-Proof Pushbutton Switches

FEATURES		SPECIFICATIONS		CURRENT RATINGS							
<ul style="list-style-type: none"><li>• Splash-proof</li><li>• Wide diameter button</li><li>• Variety of button colors available</li><li>• Momentary snap action</li><li>• Solder lug terminals</li><li>• RFI shielded version (W9623)</li></ul>		<ul style="list-style-type: none"><li>• Meets MIL-PRF-8805 seal level 6 (splash-proof)</li><li>• Electrical life: 25,000 operations minimum at rated current</li><li>• Mechanical life: 200,000 operations (50,000 operations for 3 terminal design)</li><li>• Operating force: 4 ± 1 lbs (176N ± 4.4N)</li><li>• Total plunger travel: 0.080 in. ± .015 (0.21mm ± .003) approx.</li><li>• Vibration: 10-2000Hz 15g.</li><li>• Shock: 100g. 6 Ms sawtooth</li><li>• Weight with adapter: 0.048 lbs approx.</li><li>• EMI/RFI shielded (W9623 only)</li></ul>		28VDC <sup>②</sup>			125VAC				
				Part Number	Number of Poles	Type of Operation	Resistive	Inductive	Lamp	Resistive	Inductive <sup>①</sup>
						W9600 Series	1	Momentary	10	5	3
		W9623 Series	2 Circuit	Momentary	10	5	3	—	—		
① p.f.=.75											
② 3 amps max. through center terminal.											

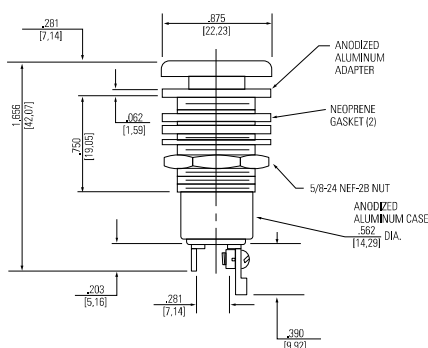
### SELECTION TABLE

#### SERIES AND TYPE

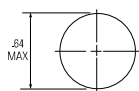
Base Catalog Number	Operation	Circuit and Schematic	Code Suffixes - Add to Cat. No.			
			Adapter Color		Pushbutton Color	
			Color	Code Suffix	Code Suffix	Code Suffix
W9601	Momentary Snap Action	1 P.S.T.-N.O.	Black Clear	B None	Red Black	R B
W9602		1 P.S.T.-N.C.				
W9603		1 P-2 Circuit				
W9604		1 P.S.T.				
W9605		3 Terminal N.O.				
W9606		1 P.S.T.				
W9606		3 Terminal N.C.				
W9606		1 P.D.T.-N.O.-N.C.				

W9600

### DIMENSIONS - W9600



### PANEL CUTOUT



### WHEN ORDERING SPECIFY...

**W 9 6 0 1 B R**

— BASIC SWITCH  
— ADAPTER COLOR  
— BUTTON COLOR

#### STANDARD

0.00 = inches

[0,0] = mm

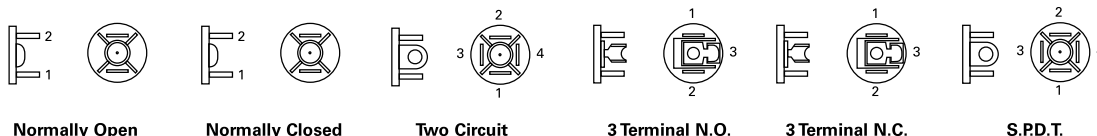
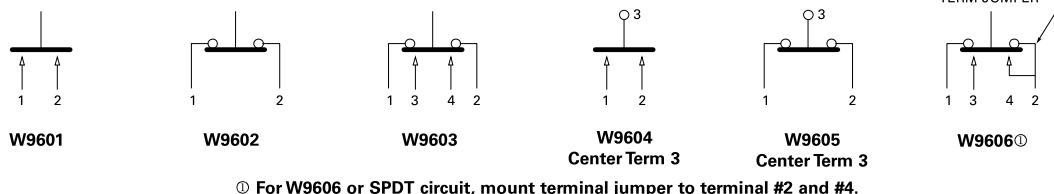
Dimensions for reference only.

# PUSHBUTTON SWITCHES

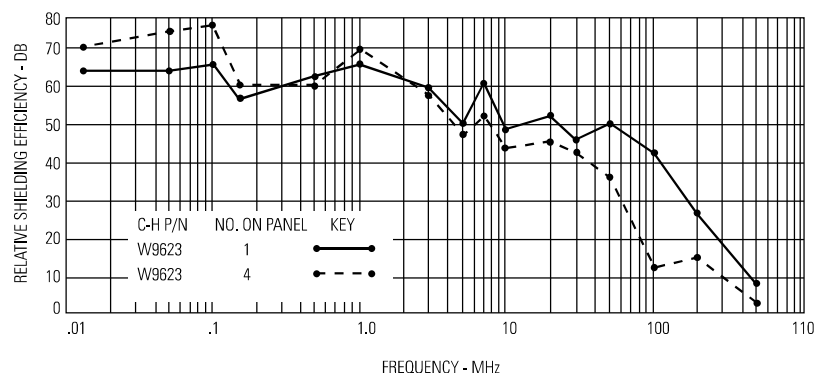
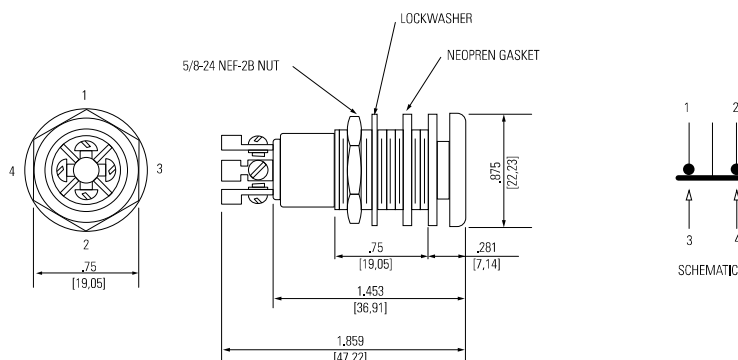
## Series - W9600

## Wide Button Moisture-Proof Pushbutton Switches

### BASIC SWITCH & SCHEMATIC DIAGRAM



### TWO CIRCUIT MODEL W9623 EMI/RMI SHIELDED



Graphic illustration defines relative shielding efficiency of RFI shielded component/ components over unshielded device.

**STANDARD**  
0.00 = inches  
[0,0] = mm

Dimensions for reference only.