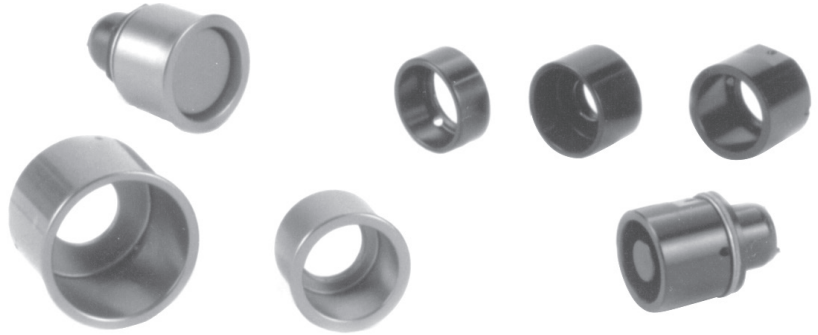


FOR PUSHBUTTON AND TOGGLE SWITCHES

Shrouds

Shrouds are added to pushbutton switches to guard against inadvertent actuation. The actuating device must be inserted into the shroud in order to actuate the switch. We have an assortment from which to choose shown here. We are also able to design and fabricate a shape to meet your specifications and application needs.

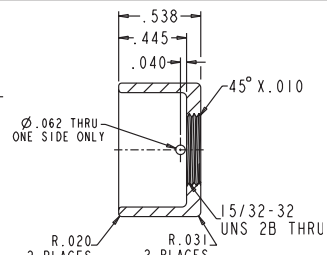
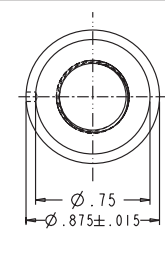
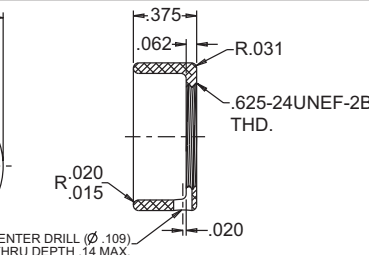
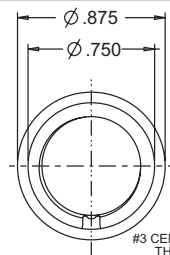


Material:

Aluminum alloy, machined to specification.

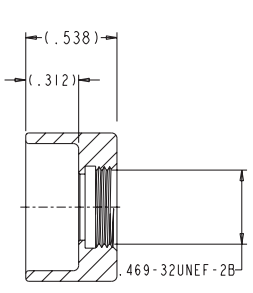
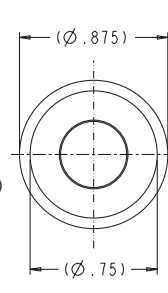
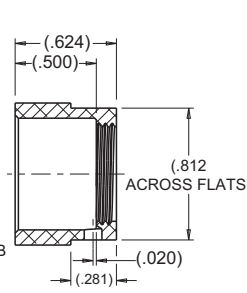
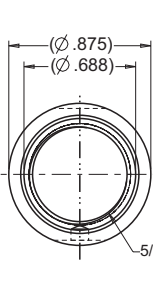
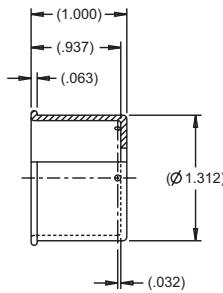
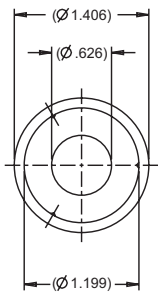
Finish:

Black anodized. For other color options, contact factory.



OTTO P/N C300793

OTTO P/N C300428



OTTO P/N C300302

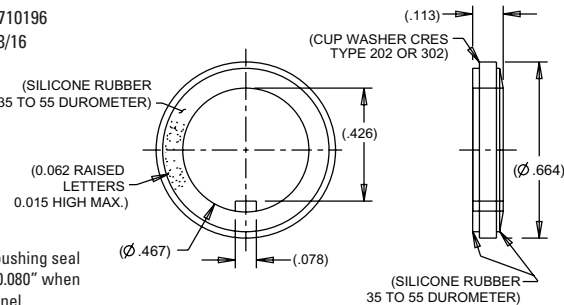
OTTO P/N C300871

OTTO P/N C300426

Panel Seals

Stainless steel cup washer with silicone rubber seal assures proper watertight panel seal. Mounts behind panel. Approved to MIL-DTL-5423/16. Designed for sealing 15/32" bushing with keyway. Available in packages of 25.

OTTO P/N: C710196
MIL-DTL-5423/16



Thickness of bushing seal is reduced to 0.080" when mounted to panel.

Gaskets

O-Rings (Buna)

| OTTO P/N | I.D. | OTTO P/N | I.D. |
|------------|--------|-------------|--------|
| C700117-25 | 0.250" | C801568-010 | 0.250" |
| C700110-25 | 0.469" | C802568-015 | 0.500" |
| C700109-25 | 0.625" | C802568-016 | 0.625" |

Mounting Hardware

MILITARY P/N

OTTO P/N

BUSHING SIZE (inches)

KEYWAY WASHERS

| | | |
|------------|------------|--------|
| MS25081-C0 | C710081-C0 | 0.250" |
| MS25081-C4 | C710081-C4 | 0.469" |
| MS25081-C6 | C710081-C6 | 0.625" |

INTERNAL TOOTH LOCKWASHERS

| | | |
|-------------|-------------|--------|
| MS35333-135 | C710333-135 | 0.250" |
| MS35333-136 | C710333-136 | 0.469" |

HEX NUTS—STANDARD

| | | |
|-------------|-------------|----------|
| MS25082-C14 | C710082-C14 | 0.250-40 |
| MS25082-C21 | C710082-C21 | 0.469-32 |
| MS25082-B11 | C710082-B11 | 0.625-24 |

HEX NUTS—WIRE LOCKING

| | | |
|------------|------------|----------|
| MS21340-04 | C710340-04 | 0.469-32 |
| MS21340-05 | C710340-05 | 0.625-24 |