

PUSHBUTTON SWITCHES

Sub-Miniature Pushbutton Switches

FEATURES

- Sealed or unsealed versions
- Low operating force
- Momentary snap action
- EMI/RFI version (BR7070)
- Black or red adapter colors available
- Clear or black case colors available
- Compact, space saving design



**B9001, 2
Single Pole**

SPECIFICATIONS

- MIL-PRF-8805 approved
- Total plunger travel:
.08/0.093 in. (0.236 mm) minimum
- Electrical life: 25,000 operations
minimum at de-rated
current
10,000 operations
minimum at rated current
- Operating force:
B9000 1.5 (6.66N) \pm .5 lb (2.22N)
BW9000, B9020
& BW9020 1.75 (7.77N) \pm .5 lb (2.22N)
B7070 1.5 (6.66N) \pm .75 lb (3.33N)
BR7070 2.0 (8.88N) \pm .75 lb (3.33N)
- Weight approx.:
B9000 0.01 lb (4.5g) Max.
& B9020
BW9000 0.01 lb (4.5g) Max.
& BW9020
B7070 0.02 lb (9.1g) Approx.
BR7070 0.02 lb (9.1g) Max.
- EMI/RFI shielded (BR7070 only)

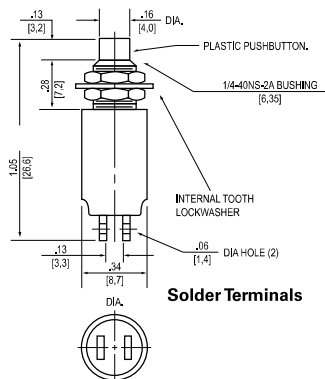
CURRENT RATINGS

| Part Number | Number of Poles | Type of Operation | 28VDC | | 125VAC | |
|---------------------|-----------------|-------------------|----------------|----------------|----------------|-----------------------------|
| | | | Resistive Load | Inductive Load | Resistive Load | Inductive Load ^① |
| B9001 | 1 | Momentary | 7 | 4 | 7 | 4 |
| B9002 | 1 | Momentary | 7 | 4 | 7 | 4 |
| BW9001 | 1 | Momentary | 7 | 4 | 7 | 4 |
| BW9002 | 1 | Momentary | 7 | 4 | 7 | 4 |
| B9021 | 1 | Momentary | 7 | 4 | 7 | 4 |
| B9022 | 1 | Momentary | 7 | 4 | 7 | 4 |
| BW9021 | 1 | Momentary | 7 | 4 | 7 | 4 |
| BW9022 | 1 | Momentary | 7 | 4 | 7 | 4 |
| B7070 | 2 | Momentary | 1 | 1 | 1 | 1 |
| BR7070 ^② | 2 | Momentary | 1 | 1 | 1 | 1 |

^① p.f.=.75

^②EMI/RFI shielded

APPROXIMATE DIMENSIONS

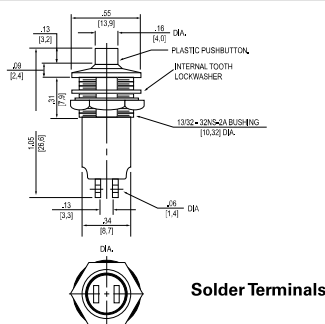


SELECTION TABLES

| Catalog Number | Military Part Numbers M8805/96 | Button Color | Circuit | Case Color | Enclosure Design |
|----------------|--------------------------------|--------------|---------|------------|------------------|
| B9001R | -001 | Red | SPST-NO | Clear | (unsealed) |
| B9001B | -002 | Black | SPST-NO | Clear | (unsealed) |
| B9002R | -003 | Red | SPST-NC | Clear | (unsealed) |
| B9002B | -004 | Black | SPST-NC | Clear | (unsealed) |
| B9001BR | -005 | Red | SPST-NO | Black | (unsealed) |
| B9001BB | -006 | Black | SPST-NO | Black | (unsealed) |
| B9002BR | -007 | Red | SPST-NC | Black | (unsealed) |
| B9002BB | -008 | Black | SPST-NC | Black | (unsealed) |
| BW9001R | -009 | Red | SPST-NO | Clear | (dust tight) |
| BW9001B | -010 | Black | SPST-NO | Clear | (dust tight) |
| BW9002R | -011 | Red | SPST-NC | Clear | (dust tight) |
| BW9002B | -012 | Black | SPST-NC | Clear | (dust tight) |
| BW9001BR | -013 | Red | SPST-NO | Black | (dust tight) |
| BW9001BB | -014 | Black | SPST-NO | Black | (dust tight) |
| BW9002BR | -015 | Red | SPST-NC | Black | (dust tight) |
| BW9002BB | -016 | Black | SPST-NC | Black | (dust tight) |



**B9021, 22
Single Pole**

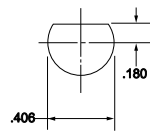
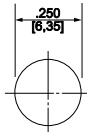
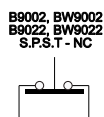
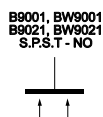


| Catalog Number | | Circuit | Case Color | Button Color |
|----------------|------------|---------|------------|--------------|
| Standard | Dust Tight | | | |
| B9021CB | BW9021CB | SP-NO | Clear | Black |
| B9021CR | BW9021CR | | Clear | Red |
| B9021BB | BW9021BB | | Black | Black |
| B9021BR | BW9021BR | | Black | Red |
| B9022CB | BW9022CB | SP-NC | Clear | Black |
| B9022CR | BW9022CR | | Clear | Red |
| B9022BB | BW9022BB | | Black | Black |
| B9022BR | BW9022BR | | Black | Red |

SCHEMATIC DIAGRAMS - B AND BW SERIES

PANEL CUT-OUT

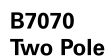
PANEL CUT-OUT



PUSHBUTTON SWITCHES

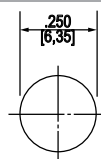
Sub-Miniature Pushbutton Switches

SELECTION TABLES



| Catalog Number | Military Part Number | Case Color | Button Color |
|----------------|----------------------|------------|--------------|
| B7070 | M8805/95-001 | Clear | Black |
| B7070R | M8805/95-002 | Clear | Red |
| B7070B | M8805/95-003 | Black | Black |
| B7070BR | M8805/95-004 | Black | Red |

PANEL CUT-OUT



PANEL MTG HOLE DIMENSIONS



| Catalog Number | Case Color | Button Color |
|----------------|------------|--------------|
| BR7070* | Clear | Clear |

*EMI/RFI shielded

PANEL CUT-OUT



PANEL MTG HOLE DIMENSIONS

[0,0] = mm

Dimensions for reference only.